

Southeast Regional Club Governance Model

Creating stronger and sustainable greyhound racing Clubs for southeast Victoria

The Southeast Regional Model is a proposed forward-thinking initiative focused on strengthening and growing sustainable greyhound racing clubs in southeast Victoria.

A first-of-its-kind partnership between the clubs of Warragul, Traralgon and Cranbourne, the proposed Southeast Regional Model will have an enhanced club governance structure, which will improve efficiency and effectiveness by combining the strengths and resources of these three prominent clubs.

If endorsed by club members, the Southeast Regional Model will be implemented in early 2024. Adapting to the ever-changing greyhound industry, it will establish a new modern governance structure that will serve and respond to the needs of participants and the community.

communications@gcv.org.au

The challenge

As the greyhound racing industry evolves, clubs face increased compliance obligations and requirements that significantly affect their office bearers and administrators. The need for more professional skills and streamlined operations has become pressing, reflecting the industry-wide drive towards higher standards.

By capitalising on shared knowledge and resources, the Southeast Regional Model will consolidate the governance of all three clubs under one regional board to create a more modern governance structure to provide a platform for a more sustainable and prosperous future.

Guiding principles



Strategic

The Southeast Regional Model will create strategic objectives, developed with member and participant input, which will align with the region's key priorities. The newly established governance model will be responsible for ensuring their successful execution and delivery.



Community

The model places a strong emphasis on member and community engagement. Coordinated activities across the region offer significant opportunities to promote greyhound racing while positively contributing to the regional communities through fundraising, events, and engagement.



Consolidation

All three clubs' committees will be replaced by one Regional Board. All three clubs will pool their resources for increased benefits, leading to improved skills, knowledge, and training; a reduction in costs; better efficiency; elevated standards; and effective risk management. Administrative tasks and reporting obligations will be streamlined, minimising duplication.



Welfare

A consolidated governance model will establish innovative regional rehabilitation, veterinary, and adoption services, promoting community acceptance of greyhound racing and creating positive community interactions. Region-wide services will provide additional resources for trainers and owners for rehoming greyhounds.



Efficiency

The model presents a significant opportunity to avoid cost duplication and create shared services in corporate activities. By operating under the same model, the clubs can leverage greater bargaining power with vendors and access bulk purchase opportunities.



Accountability

The model will establish a skills-based Regional Board led by an independent Chair to ensure effective leadership and decision-making. The Board will adhere to principles of transparency and integrity, with well-defined objectives and open channels of communication for valuable advisory contributions.

The implementation of a Racing Consultative Committee will ensure that key club racing-related matters are addressed and the Regional Board is properly informed.

Timelines

**These timelines are indicative only and may change depending on consultation requirements and availability of club members and meeting times.*

August 2023

- Stakeholder consultation begins for the Southeast Regional Model, allowing club members to provide feedback on the proposed new structure.
- A working group consisting of staff from the three clubs, Greyhound Racing Victoria, and Greyhound Clubs Victoria will engage with club members and the community to discuss the proposed model and various governance options.

October 2023

- Following a three month consultation period, a business case for the Southeast Regional Model will be developed and finalised in October 2023.

November 2023

- All club members will have the opportunity to vote on the Southeast Regional Model under each club's constitution at their respective Annual General Meetings

January to February 2024

- If the Southeast Regional Model is endorsed by relevant stakeholders, then a robust and transparent recruitment process will begin for the new Regional Board and CEO appointments.

March 2024

- If endorsed by stakeholders, the Cranbourne, Traralgon and Warragul Club Committees will be consolidated into the Southeast Regional Model.
- A new Company Limited by guarantee will be created, and will be governed by a unified, skills-based board.
- A new Racing Consultative Committee will be established to provide valuable feedback and advice to the Board.

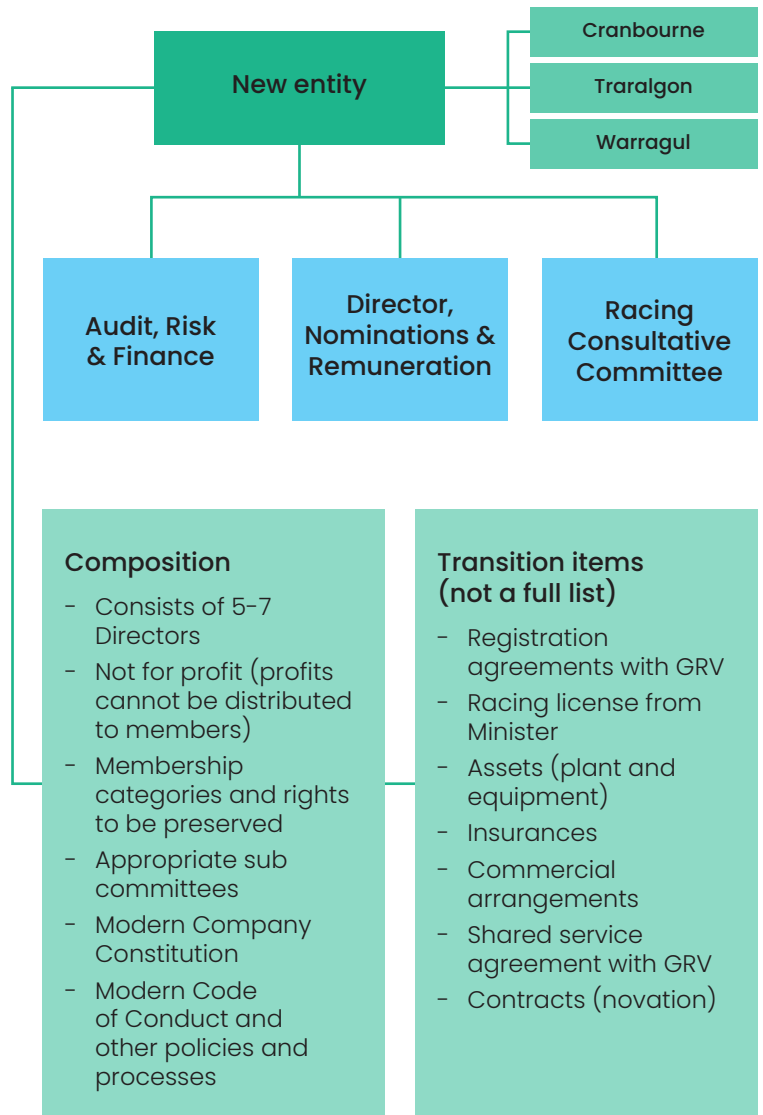
April 2024

- All necessary legal instruments will be in place to support the new structure and racing program.
- The new systems, processes and technologies will also be established to support the new entity's operations.

June 2024

- A formal review of the Southeast Regional Model will commence.

Governance model



Get in touch

Your feedback is absolutely essential in shaping the development of the proposed Southeast Regional Model. If you have any questions or feedback, please don't hesitate to get in touch via email communications@gcv.org.au

We value your input and look forward to hearing from you.

FAQs

What is the Southeast Regional Club Governance Model?

A merger of three existing clubs into one new entity utilising their strengths and resources to establish a modern and robust club governance structure. This is a future-proofing initiative designed to strengthen, grow, and build a sustainable greyhound racing industry in southeast Victoria. This groundbreaking partnership involves the clubs of Warragul, Traralgon, and Cranbourne.

Why do we need a new governance model for the southeast region?

The Southeast region is a key pillar in the greyhound racing industry. Currently, two out of the three clubs are in administration and have faced significant governance challenges in recent years. This proposal provides an opportunity to take the pressure off local volunteer committee members of an expectation to meet high governance standards and practices required to take the greyhound racing industry forward.

What are the benefits of the Southeast Regional Club Governance Model?

By consolidating the resources of all three clubs, the model will have numerous advantages, including:

- Governance uplift to ensure compliance with Director obligations
- Enhanced skills, shared knowledge, and training across the clubs
- One Regional CEO who will be responsible for the management of each of the three clubs reporting to the new Board
- Improved efficiency and accountability
- Effective risk management
- Streamlined administration, minimising duplication.

Will the clubs' racing and trialling schedules be impacted by the new structure?

No, the proposal is not expected to impact day-to-day racing and trialling schedules. Potential options for additional trials may be considered at a later stage.

What will happen to my club membership?

Your club membership will be recognised under the new structure, including life members.

The proposal will aim to align and preserve all existing members' rights across all three clubs. A new entity will have the power to create, and recognise, any membership categories it needs.

What will happen with the existing club's assets?

Under the proposed changes, all key assets of the three clubs will be transferred to the new entity. This includes items such as the Registration Agreement with Greyhound Racing Victoria, Racetrack Licence issued by the Minister for Racing, the lease to occupy the premises, existing Funding Agreement with Greyhound Racing Victoria, and all other assets relevant to the future operation of greyhound racing. Any asset transfers will occur in accordance with each club's constitution.

What is the purpose and structure of the Southeast Regional Board?

The Board will provide leadership and governance across the three clubs, overseeing strategic objectives. It will comprise an independent Chair and between five and seven Board members representing a diverse set of skills and experiences. All Board positions will be remunerated in accordance with similar organisations and responsibilities.

Can I apply to be an Regional Board member?

Yes. Anyone can apply to become a Board member. The key selection criteria will include, but not limited to, experience in corporate governance, compliance, risk management, financial, commercial acumen, leadership or strategic roles.

What is the purpose and role of the Racing Consultative Committee?

The Racing Consultative Committee aims to represent the unique interests across the three individual clubs. It works towards alleviating clubs of governance responsibilities while maintaining the enjoyable aspects of club membership and industry engagement. It is important to remember that individual club members and participants will always be able to provide direct feedback and input to the new Board.

Can I apply to be a Racing Consultative Committee member?

Yes. Anyone can apply to become a Racing Consultative Committee member. The key selection criteria will include, but not limited to, experience in greyhound racing, training, breeding, racing safety, club experience, and animal welfare.

Will there be any job losses to current club staff?

The proposal does not include any job losses, however some staff roles may change under the new model and these are matters that will be determined by the new entity Board and CEO. The streamlined operations would reduce burdens and increase efficiencies, benefiting all involved. Staff will have better opportunities to grow, gain experience and further develop their skills and careers. The key focus of the Southeast Regional Model is to optimise and enhance the governance structure.

How will the Board members be appointed?

The new entity's constitution will set out how Board members, including the Chair, are elected or appointed but are likely to be based on modern practices including rotating positions with maximum terms, as well as transparent and competitive recruitment processes. A similar process will also be undertaken to determine initial Board appointments.

How will the Regional CEO be appointed?

The Board will appoint the Regional CEO, through an independent and rigorous recruitment process.

What will happen to the three club's existing club committees?

Any current club committees (noting that two clubs are currently in administration) will no longer be required. There will be an opportunity for all current and past committee and club members to apply for positions on the newly established Board or the Racing Consultative Committee.

How will the proposed model be funded?

The proposed new Company will have a separate funding agreement with Greyhound Racing Victoria.

The Consultative Board structure will be funded by the proposed new Company.

How can we talk about what this means?

We understand the proposed Southeast Regional Model may raise concerns or questions. To address these and provide more information your club may organise an in-person information session, online surveys, ongoing email updates, or any other forms of communication and consultation that you think is necessary to address any questions you might have about the proposal.